

El Molino del Conde - Bedrooms

The description of the bedrooms is divided into the two "wings" of El Molino del Conde on either side of the courtyard.

- **El Molino Viejo:** accommodation is on two floors, 6 bedrooms, 4 bath/shower rooms
- **La Casa del Molino** all ground floor accommodation, 4 bedrooms, 3 bath/shower rooms

Of the 10 bedrooms, there are 7 double bedrooms (5 of these bedrooms can be made up as twins if you prefer) and 3 twin bedrooms. We have several extra single beds and 5 cots (cribs) for babies. All rooms have fans and 3 have air conditioning.

El Molino Viejo

The Hayloft

- A "Master Bedroom"
- Queen size double with en-suite shower
- Bed: 150cm wide and 190cm long (approx 4'11" wide, 6'3" long)
- Air Conditioning
- Ceiling Fan
- Space for a baby's cot (crib)
- Suitable for a couple



A large double bedroom with en-suite shower room, Queen-sized double bed, high beamed ceiling and views over the grounds and surrounding hills. There's room for another single bed in the bedroom if required and plenty of room for cots (cribs).

This first-floor bedroom is set slightly apart from the other bedrooms and is often chosen by (mobile!) Grandparents when extended families holiday at El Molino del Conde.

The Yellow Suite

- A "Master Bedroom"
- Queen size double with en-suite bathroom.
- Bed: 150cm wide and 190cm long (approx 4'11" wide, 6'3" long)
- Air Conditioning
- Space for a baby's cot (crib)
- Suitable for a couple



A large en-suite double bedroom with probably the best bathroom at El Molino del Conde! (the Yellow Bathroom) This bedroom has a separate access from outside and can therefore be quite separate from the other bedrooms in El Molino Viejo. Alternatively, it can be an interconnecting room with *The Arch Bedroom*.

The Arch Bedroom

- Double bed
- Bed: 135cm wide and 180cm long (approx 4'5" wide and 5'11" long)
- Most suitable for one adult or 1 or 2 children sharing (Can be used by a couple when the house is full, but this is the smallest double room and access to the bathroom is through *La de los Niños*)

A double bedroom which is again full of character with a high beamed ceiling and views down to the stream. This room also works well as a single bedroom for adults or as a connecting room for children with parents in the *Yellow Suite*. There is room for a cot (crib). Often used by the children of the parents in the yellow suite (sharing the yellow suite bathroom) or a teenager (sharing the yellow or blue bathroom)



Jasmine's Room

- A "Master Bedroom"
- Double bed
- Bed: 135cm wide and 190cm long (approx 4'5" wide, 6'3" long)
- Air Conditioning
- Suitable for a couple

A lovely double bedroom with views over the gardens. Works very well as a room for parents with 2 or 3 children next door in *La de los Niños*. Note: access to the bathroom is through *La de los Niños*



La de los niños (Molino Viejo)

- One double and one or two single beds
- Shares a bathroom with *Jasmine's Room*.

This bedroom can be made up as a single, twin or even triple suitable for children. In this configuration, the house can sleep 20+ however access to the blue bathroom is through this bedroom making it less suitable for adults. Works well for children with parents in *Jasmine's Room*



The Courtyard Bedroom

- Double with shower room next door
- Bed: 135cm wide and 200cm long (approx 4'5" wide, 6'7" long)
- Could add an extra bed
- Suitable for a couple or 2 singles



La Casa del Molino

Garden Suite

- A "Master Bedroom"
- Double room with en-suite shower room
- Bed: 135cm wide and 180 cm long (approx 4'5" wide, 5'11" long)
- Suitable for a couple or 1 single adult

Always a favourite with star-gazers and birdwatchers as there is a door leading directly onto the lawns and terraces.



Chimney Suite

- A "Master Bedroom"
- Double room with en-suite shower room
- Bed: 135cm wide and 200cm long (approx 4'5" wide, 6'7" long)
- Space for a baby's cot (crib)
- Suitable for a couple

La de la Chimenea is a large double bedroom with en-suite shower room, high beamed ceiling and working fireplace.



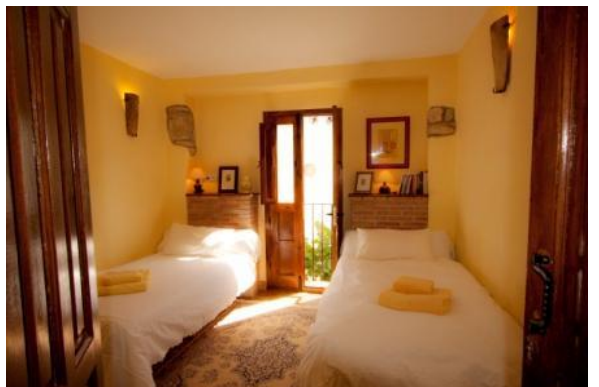
La de los Abuelos

- Twin room with balcony overlooking the courtyard
- Beds: 105cm wide and 190 cm long (approx 3'5" wide, 6'3" long)
- Shares the family bathroom with *La de los Niños*
- Family bathroom: Large bathroom with twin wash basins, bathtub and separate shower cubicle
- Suitable for 2 singles



La de los Niños (Casa del Molino)

- Twin room with balcony overlooking the courtyard
- Beds: 90cm wide and 180cm long (approx 2'11" wide, 5'11" long)
- Shares the family bathroom with *La de los Abuelos*
- Suitable for 2 singles



El Molino del Conde floorplans

La Casa del Molino
(Ground floor)

El Molino Viejo
(1st floor)



El Molino del Conde floorplans

El Molino Viejo
(Ground floor)

